

Biomass Burning Situation in S.E.Asia



**1 st GOFC-GOLD Fire Inter-Regional
Network meeting , Sun City, May 9, 2011**



SOUTH EAST ASIA REGIONAL INFORMATION NETWORK

History of SEARRIN



- LUCC Phase I
 - 1993: Network is established in Manila, Philippines for development of an operational methodology for monitoring LUCC
 - 1994: common method and data collection protocols were initiated
 - ✦ Four case studies selected
 - Malaysia : Klang-Langat watershed
 - Philippines : Magat Watershed
 - Thailand : Mae Chaem Watershed
 - Indonesia : Citarum Watershed

History of SEARRIN



- 1994-1997:
 - ✦ the internal coordination workshops conducted in rotating locations among participating countries
- 1998 :
 - ✦ all the participating countries have produced their country reports, in hard and soft copies.
 - ✦ Individual countries also set their own web page in Lucc project which are linked to SEA START network
- Lucc Phase II
 - 1999:
 - ✦ Develop case studies to determine deforestation dynamics
 - ✦ Regional network was expanded through involvement of more scientists and case studies

History of SEARRIN



- Lucc Phase II

- 2000:

- ✦ The regional network compilation of Lucc dataset for outreach package was also strengthened through
- ✦ Web page on Lucc project for each country
- ✦ Interactive CD ROM developed in cooperation with the IGBP-DIS
- ✦ Development of regional integrated metadata system was also initiated (SEA START RC, DIF)

- Lucc Phase III

- 2001-2002

- ✦ SEARRIN Science Meeting and Field Training took place from APN funding

History of SEARRIN



- Post LUCC phase I-III
 - 2004:
 - ✦ SE-Asia Burnt Area Workshop in Selangor, Malaysia
 - 2009
 - ✦ NASA-LCLUC Science Team Joint Meeting with MAIRS, GOFC-GOLD and SEA START in Khon Kaen Thailand

Situations of Network



- Lack of funding for projects to keep up activities and strength of the network -> scientists work on their own resources
- Network is not recognized by local government -> difficult to take further actions on mitigation process

Fire-IT Roles

- Assisted Geo-Informatics and Space Technology Development Agency (GISTDA), Thailand for establish a Term of Reference(TOR) for the new Satellite receiving system
- The system was installed and operated on May 2010

Geo-Informatics and Space Technology Development Agency



TERAWEB HOME PAGE

Welcome to our Home Page

Please select from one of the following services:

- [HotSpot™ Fire Detection](#)
- [StormTracker™](#)
- [TeraCat™ Satellite Data Catalog](#)

Geo-Informatics and Space Technology Development Agency



HOTSPOT

VULCAN HOTSPOT IMAGERY

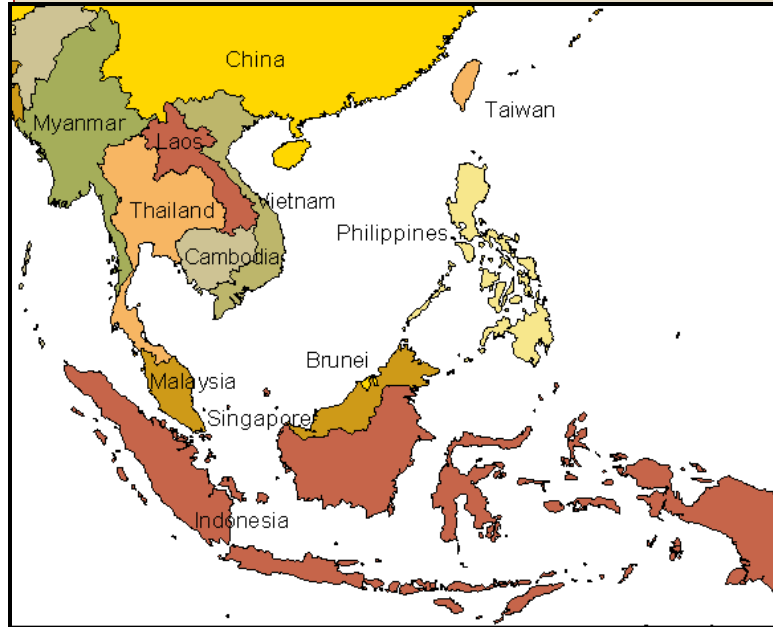
Please select one of the following Telemetries

Telemetry: Latest Hotspot Detection ▼

RESULTS



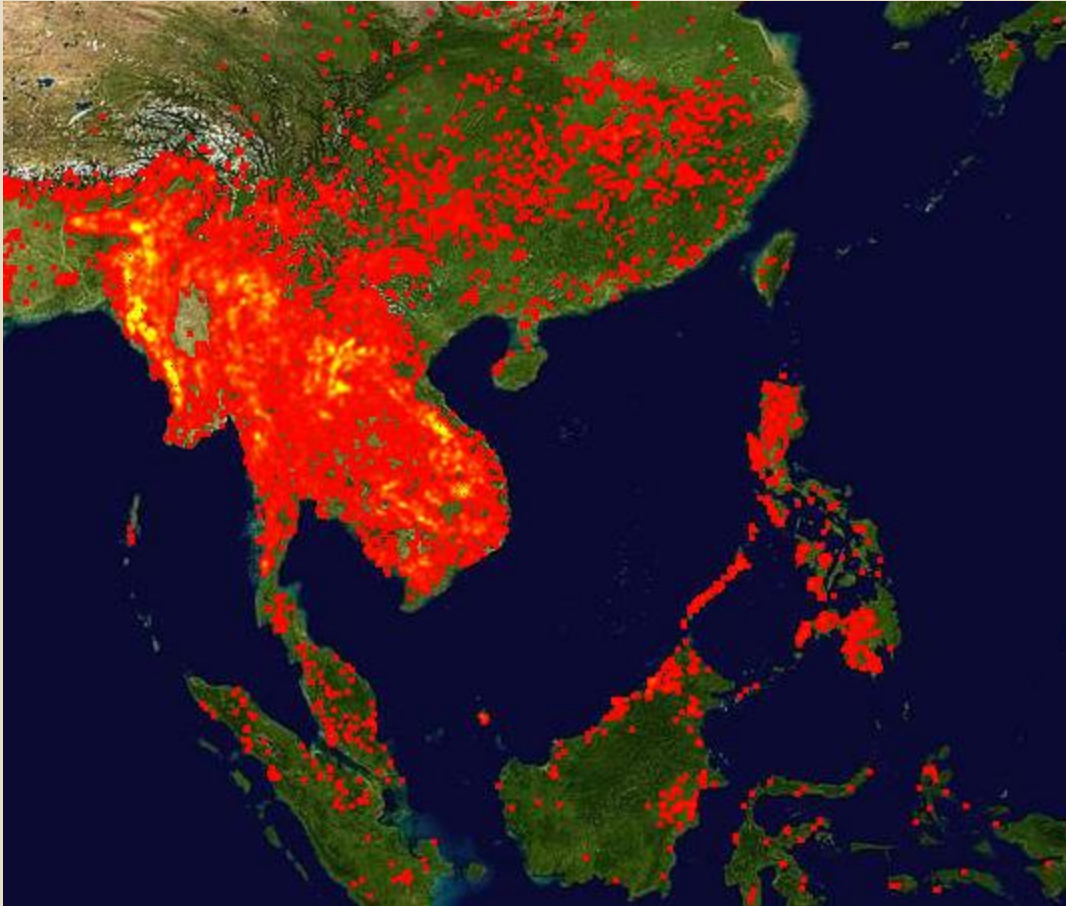
Biomass Burning Situation in SE-Asia



- Usually occurs from land clearing and/ or crop residue burning during dry season
(May-Sep for lower part of region and Nov-Apr for upper part of region)



Biomass Burning Situation in SE-Asia



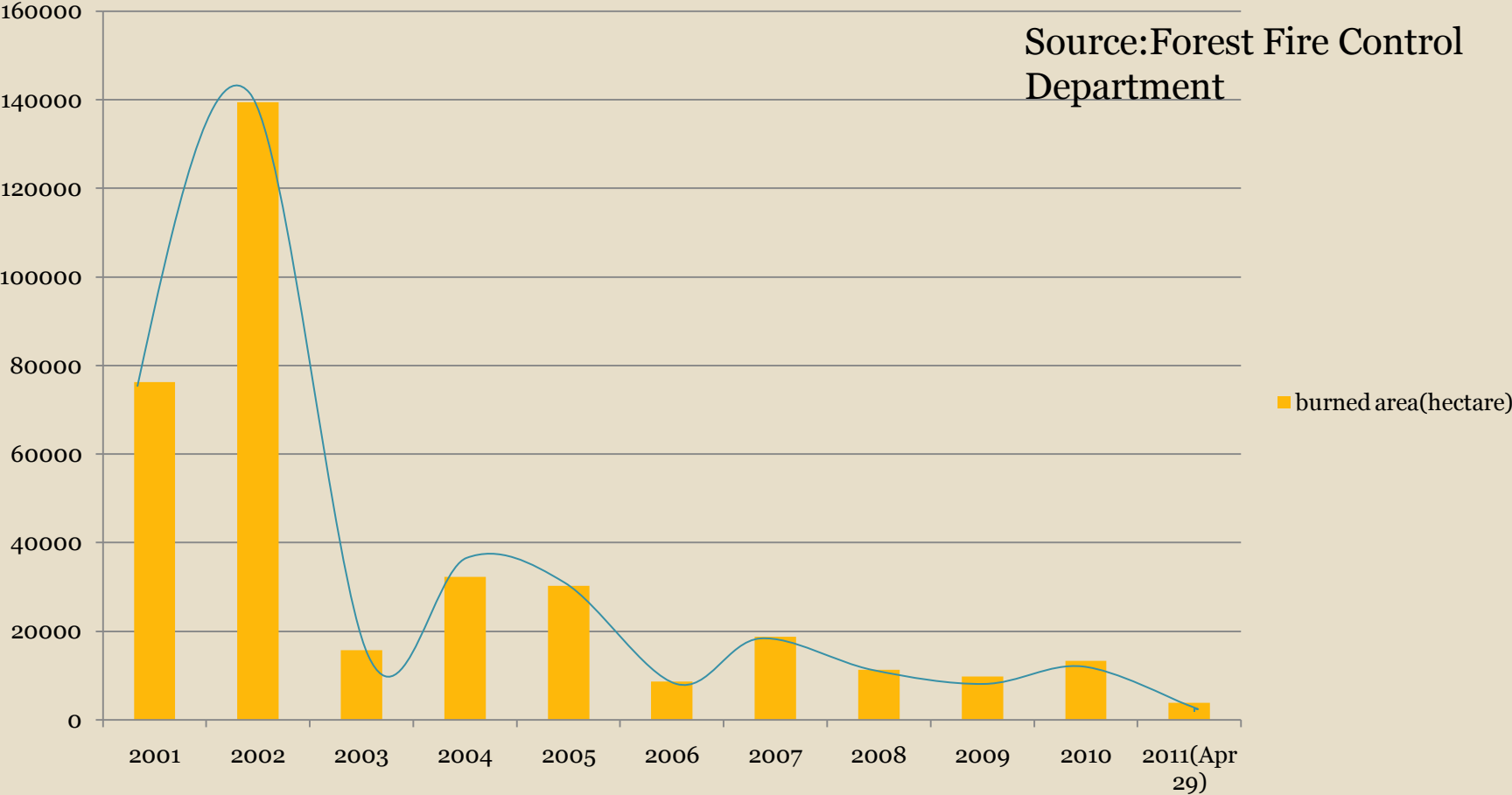
Last Year Situation:
fire map available:
03/12/10 -03/21/10

Biomass Burning Situation in SE-Asia



Statistics for burned area in Thailand

Source: Forest Fire Control Department



Biomass Burning Situation in SE-Asia



What are the reasons behind the up and down trend?

- Local people got educated that biomass burning is a bad thing?
- Government put the hard effort on biomass burning prevention?
- The climate condition play significant role on this situation?

Biomass Burning Situation in SE-Asia



What should the network and/or scientists do for all stakeholders to keep the trend go down?

- Forest Fire Control Department : need the faster fire detection system/information so they could take action as soon as they can.
- Locals who burned need to realize the consequence and drawback of biomass burning activities.
- People who suffering from biomass burning activities should be informed about the burning and air quality situation.

Biomass Burning Situation in SE-Asia



What are all obstacles?

- There are no geostationary satellite that equipped w/ fire detection sensor in the region
- Still need more research in the region for fully understanding the biomass burning and its consequence
- The collaboration between network and/or scientists to all stakeholders.

Biomass Burning Situation in SE-Asia



- The current/ongoing project in SE-Asia on Biomass burning research
 - ✦ Thailand : Forest Fire Control Dept: Validation of MODIS Fire product, Universities: Emission factors and inventories from biomass burning, air pollution modeling, aerosols research in Thailand, Laos, Myanmar, Cambodia
 - ✦ Philippines: Atmospheric Monitoring and Modeling in the Manila Observatory
 - ✦ Singapore: Aerosols analysis(National University of Singapore)
 - ✦ Malaysia: Remote and Optical Sensing Research, Universiti Sains Malaysia
 - ✦ Indonesia: Measurement of fine and coarse particle in Bundung, Institute of Technology Bandung

Biomass Burning Situation in SE-Asia



- The current/ongoing project in SE-Asia on Biomass burning research
 - The 7-SEAS <http://7-seas.gsfc.nasa.gov/>

NASA GODDARD SPACE FLIGHT CENTER [+ Visit NASA.gov](#)

7-SEAS

Seven SouthEast Asian Studies Mission

[+ OVERVIEW](#) [+ INSTRUMENTATION](#) [+ DATA](#) [+ LOGISTICS](#) [+ MEETINGS](#)

[+Home](#) • [NASA ROSES Call for 7-SEAS Activities via SEAC⁴RS \(proposals due 1 February 2011\)](#)

Home

[+ ABSTRACT](#)
[+ OBJECTIVES](#)
[+ PLAN](#)
[+ REPORTS](#)

7-SEAS Quick Links
[+ Partners](#)
[+ Contacts](#)
[+ Latest White Paper \(draft\)](#)

[+ Data Repository](#)
[+ Satellite Images](#)

[+ Privacy Policy and Important Notices](#)

NASA Curator: David Giles
NASA Official: Brent Holben
Last Updated: November 15, 2010

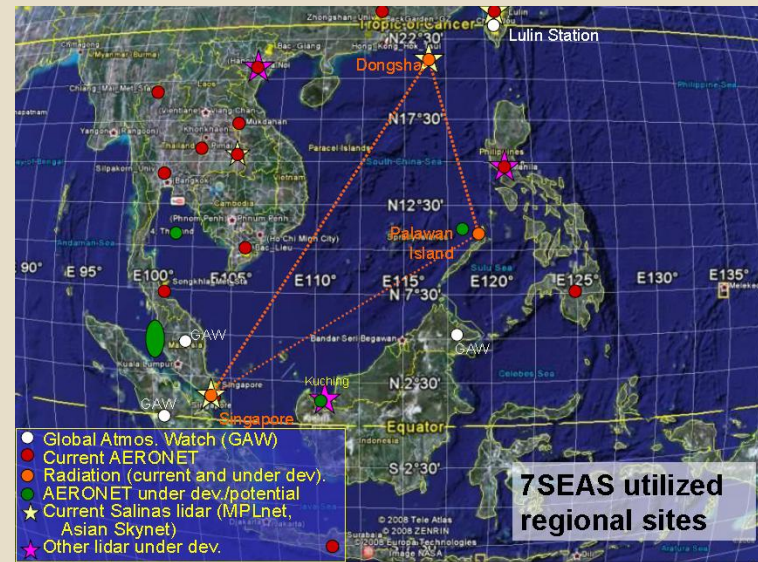
Biomass Burning Situation in SE-Asia



○ The 7-SEAS <http://7-seas.gsfc.nasa.gov/>

✦ This project proposed to investigate the impacts of aerosol particles on *weather and the total SE Asian environment*
Areas of this investigation

- Aerosol lifecycle and air quality
- Tropical meteorology
- Radiation and heat balance
- Clouds and precipitation
- Land processes and fire
- Oceanography (phys. and bio.)
- Analysis and prediction



Biomass Burning Situation in SE-Asia



- The 7-SEAS <http://7-seas.gsfc.nasa.gov/>
- ✦ A NASA airborne field campaign focusing on atmospheric composition, chemistry, and climate over Southeast Asia related to:
 - Asian monsoon circulation impacts on upper troposphere/lower stratosphere composition
 - Biomass burning impacts on atmospheric composition, radiation, and clouds
Nominal deployment period: August –September 2012

