

# RedLatif

## Latin American Network of Remote Sensing and Forest Fires

Stressa, Italy  
October 17-19<sup>th</sup>, 2011

Maria Isabel Cruz Lopez  
RedLatif  
Coordinator



# Contents

- 1.- New members
- 2.- WEB page
- 3.- Meeting 2010
- 4.- Capacity building



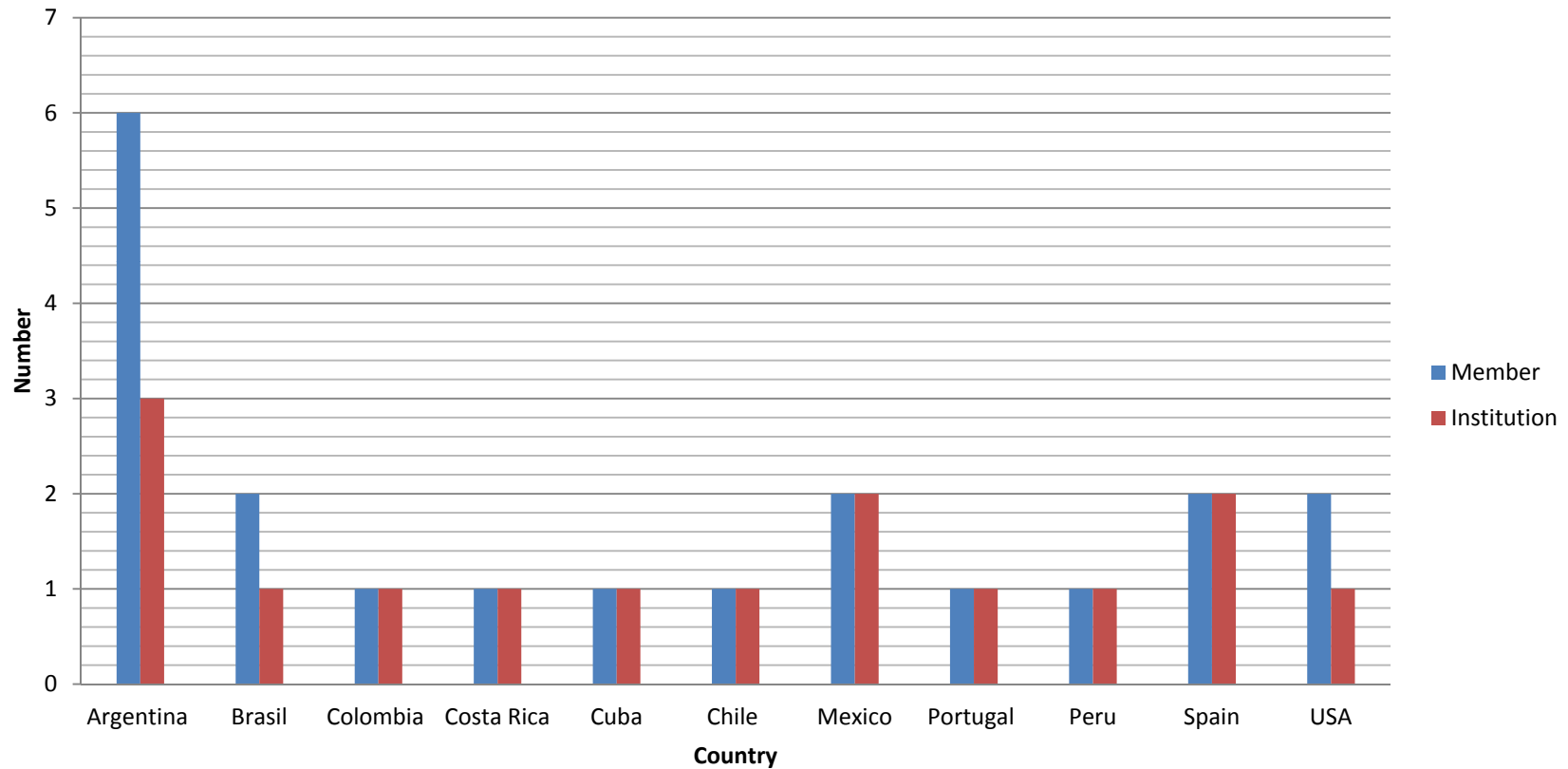
# Objective

To coordinate projects related with forest fires using remote sensing and geospatial technology, among Latin American countries.



# Members

20 people of 15 institutions from 11 countries



# Members



Carlos di Bella  
INTA, Argentina



Nicolas Mari  
INTA, Argentina



Cesar Ribella  
INTA, Argentina



Hector del Valle  
CENPAT  
Argentina



Paula Blanco  
CENPAT  
Argentina



Walter Seone  
Lujan U., Argentina



Alberto Setzer  
INPE , Brazil



Fabiano Morelli  
INPE , Brazil

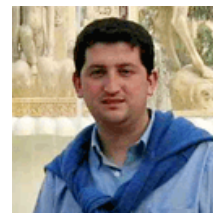


Jesus Anaya  
Medellin U.,  
Colombia

**Luis Diego Roman \***  
( Costa Rica)



Eva Mejia  
Meteorology I.,  
Cuba



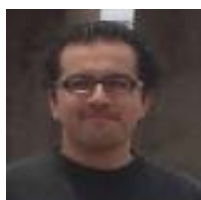
Sergio Opazo  
Magallanes U.,  
Chile



Isabel Cruz  
CONABIO  
Mexico



Lilia Manso  
Geography I.  
Mexico



Gerardo Lopez  
(Agronomy, I. ,  
Portugal)



**Isabel Nolasco \***  
Peru



Emilio Chuvieco  
Alcala U., Spain

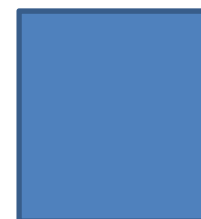


Federico Gonzalez  
(INIA, Spain)



Ivan Csiszar  
NOAA, USA

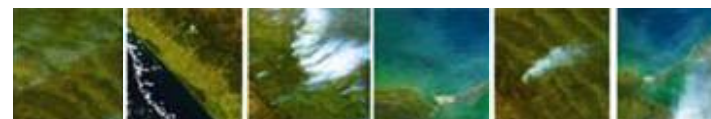
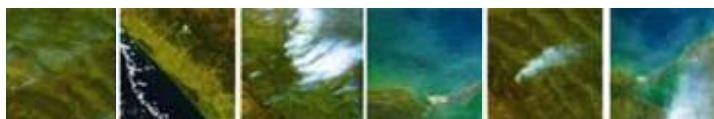
**Wilfrid  
Schroeder**  
NOAA, USA



Five students

20 people of 15 institutions from 11 countries

**\* Members of Global Wildland Fire Network**



# WEB page

English version





## Projects section

The screenshot shows the 'Projects' tab selected in the website's navigation menu. The main content area features three project highlights:

- SERENA**: Latin American Network for the Monitoring and Study of Natural Resources. It describes a 40-year history of environmental change in Latin America and provides a website link: [http://www.fuego.org.ar/serena/inicio/inicio\\_es.html](http://www.fuego.org.ar/serena/inicio/inicio_es.html).
- AQL2004**: Burnt Area Mapping in Latin America during 2004. It details the use of MODIS data to map burned areas across the Americas, mentioning the GLFC of the University of Maryland and the estimated total burned area of 153,215 square kilometers.
- Land use change in the Rio de la Plata Basin: trends, drivers and impacts.** This section discusses the impact of human demand on land ecosystems and the need for sustainable land use planning.

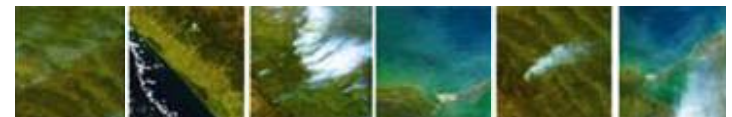
Sidebars on the left include 'Latests news...' (listing the RedLaTIF annual meeting), 'COURSES' (listing remote sensing and radar imagery topics), and 'CONTACT' (providing contact information for the coordinator, María Isabel Cruz López).

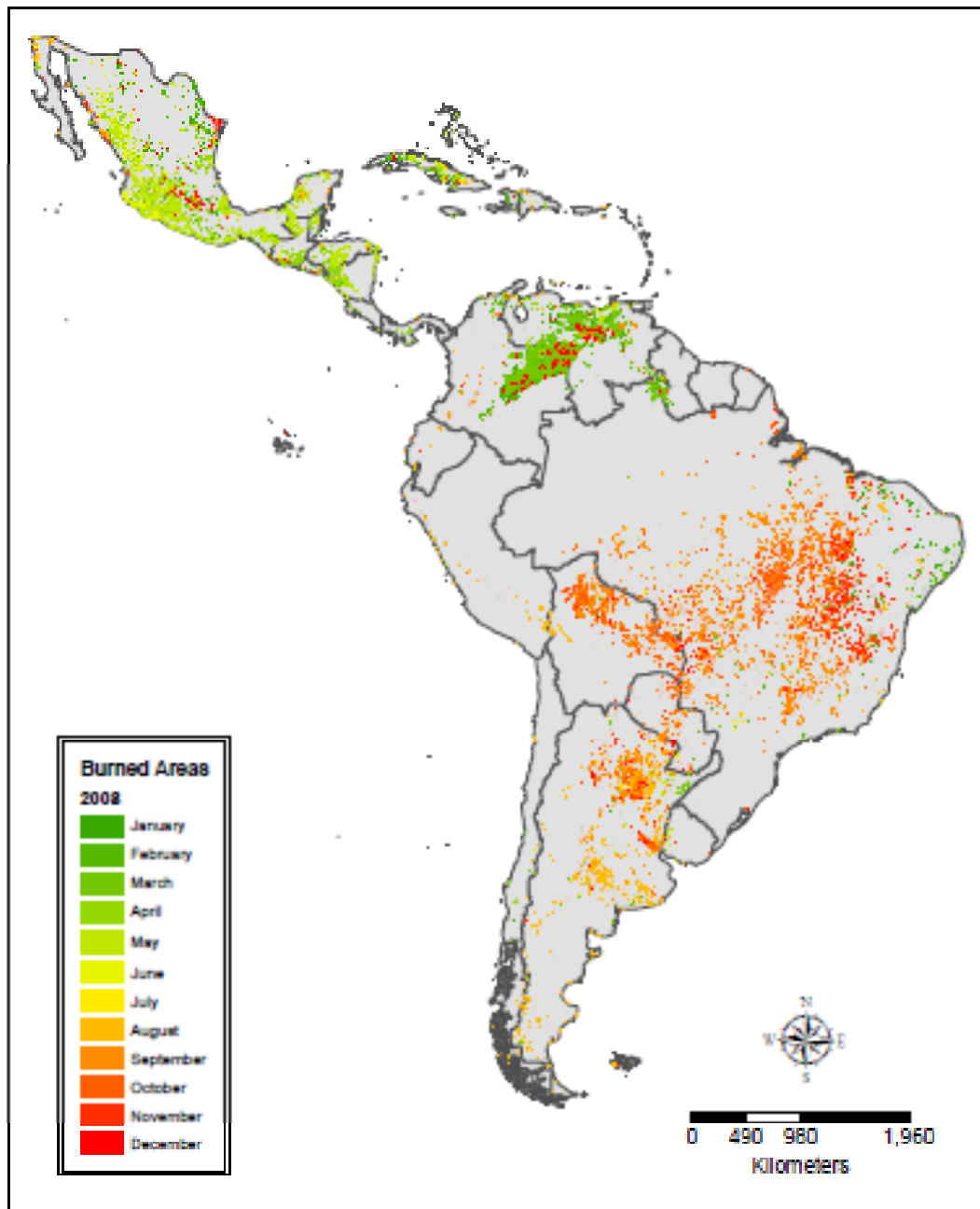
## Documents section

The screenshot shows the 'Documents' tab selected in the website's navigation menu. The main content area features a 'Guidelines' section with a link to 'RedLaTIF Organization Guidelines' and a 'History' section with a link to 'RedLaTIF throughout the years'. Below these are 'Meetings' listed chronologically:

- November 2010 - Guanajuato, Mexico**: Annual meeting RedLaTIF and SERENA project. Includes links for 'Download report' and 'Download document'.
- April 2009 - São José dos Campos, Brasil**: Change of coordination head. Includes a link for 'Download report'.
- September 2007 - Mar del Plata, Argentina**: Progress and future of the network. Includes a link for 'Download report'.
- September 2006 - Cartagena de Indias, Colombia**: Presentation of preliminary results of the AQL2004 project in the XII SELPER Symposium. Includes a link for 'Download report'.
- Diciembre 2005 - Mexico City, Mexico**: AQL2004 project workgroup meeting. Includes a link for 'Download report'.
- November 2004 - Santiago de Chile, Chile**: Mapping Burned Areas with Remote Sensing Workshop.

Sidebars on the left include 'Latests news...' (listing the RedLaTIF annual meeting), 'COURSES' (listing remote sensing and radar imagery topics), and 'CONTACT' (providing contact information for the coordinator, María Isabel Cruz López).





REDLATIF-  
SERENA  
AQL2008  
(Preliminar  
y results)



# Others activities

❑ REDLATIF established communication with CONAE from Argentina to work with NIRST sensor of SAC-D satellite.

❑ Exchange of technology among Direct readout stations (Mexico, Brazil, Argentina and Chile)

- CONABIO (Mexico) installed its program of forest fires in INTA (Argentina) and SAF (Chile).

- INPE (Brazil) gave another algorithm for detected forest fires to CONABIO and INTA.



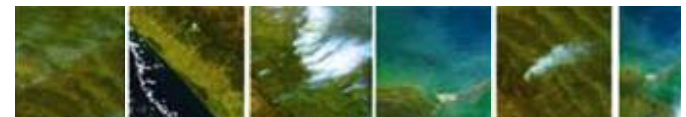
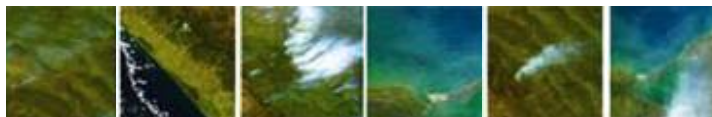
# Wild fires and hot spot detection system for Latin America



INPE integrates hot-spots detected identified by the same algorithm on a daily basis from CONABIO and INTA.

The information is published on:

<http://www.dpi.inpe.br/proarco/bdqueimadas/>



▸ [Home Queimadas](#)

## Information

▸ [Introduction](#)

▸ [FAQ](#)

▸ [Publications](#)

## Highlights

▸ [Current Situation](#)

▸ [Fire Danger](#)

▸ [GIS Fires](#)

▸ [GIS Protected Areas](#)

## Other Products

▸ [Fire Meteorology](#)

▸ [Monthly Maps - loops](#)

▸ [NOAA Fires](#)

▸ [MODIS Fires](#)

▸ [GOES Fires](#)

▸ [MSG Fires](#)

▸ [Smoke & Emissions](#)

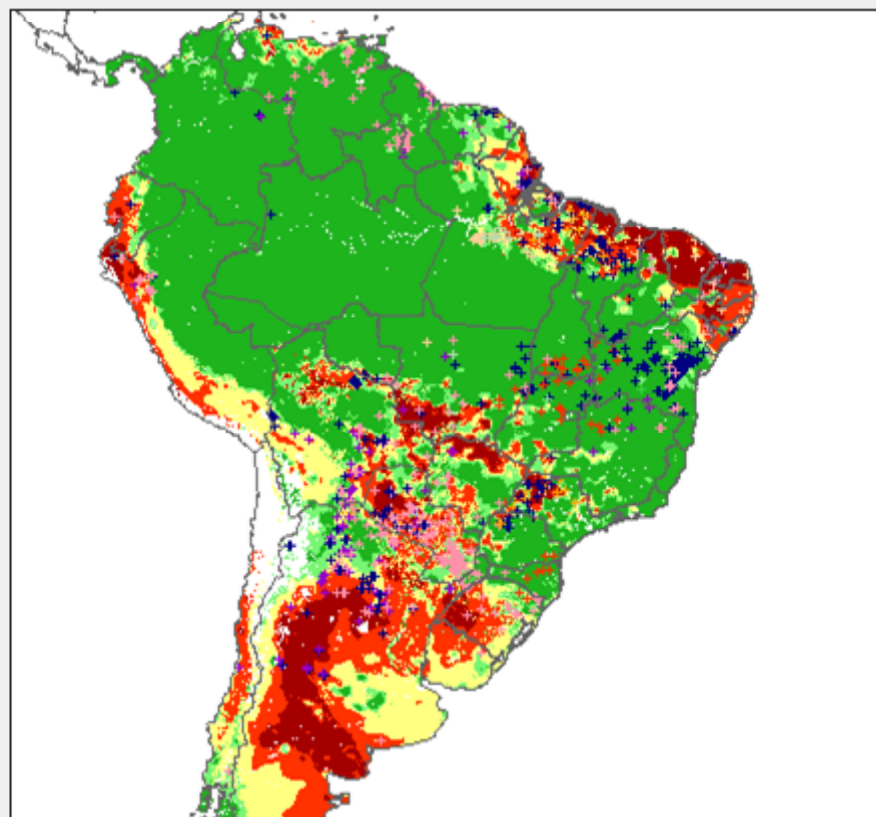
▸ [Where are the satellites?](#)

## Situação Atual

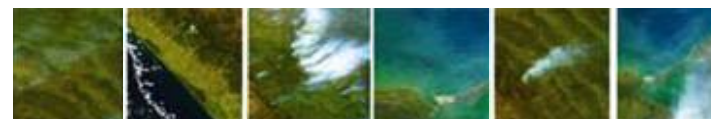
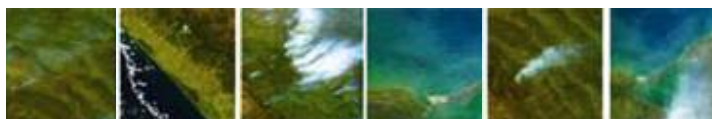
Dados do período de 2011/10/17 00:00:00 até 2011/10/18 13:18:28 (TMG)

X [Nuvens](#) [Risco de Fogo](#) [Fumaça](#) [Vegetação](#) [Img Modis](#) [Img TM](#)

Por favor, aguarde para que a imagem seja carregada.



III



# Annual meeting 2010

Guanajuato City, Mexico

9 and 10 November, 2010

Participation: 24 participants

## Objectives:

- ✓ Inform about two GOFC-GOLD meetings GOFC-GOLD Fire Implementation Team Workshop and 4<sup>th</sup> GOFC – GOLD REDD Sourcebook Development Workshop
- ✓ Integrate participants of the Global Wildland Fire Network (GWFN) into REDLATIF
- ✓ Analyze the participation of REDLATIF in GOFC-GOLD validation activities
- ✓ Define future directions for REDLATIF.



# Agreements

- Federico Gonzalez will generate a proposal for an initiative for the participation in REDD + in the topic of fires.

**He has proposed two main topics (October 2011)**

- **Deforestation and degradation by forest fire in Latin-American.**
- **Biomass operational estimation (lidar+radar+vis+ir+nir)**

- Isabel Cruz will communicate with Dr. Adja Hoffmann, who is the coordinator of the GOFIC regional networks, to establish communication with the land cover network coordinated by Carlos Souza.

- Luis Diego Roman will digitize the Forest Fire Prevention Manual for sharing it with REDLATIF.

- Fabiano Morelli will generate a proposal for training for the GWFN regional networks, in two areas: training for the management of information generated by remote sensing methods; and the topic of remote sensing.

- The members of the GWFN will develop a document on the training needs to be covered.

- For the training **financial resources** will need to be sought for the various stages: preparation of the material, courses and evaluation.



# Capacity building

1.- Multi-temporal analysis of remote sensing, taught by **Dr. Emilio Chuvieco**, Department of Geography, University of Alcalá de Alcalá, with a duration of eight hours.

## ***Objective***

To teach to the students about the possibilities of remote sensing for detecting and analyzing changes over the territory.

37 people from Bolivia, Argentina and Mexico attended to the workshop.

2.- Theoretical and practical course of analysis and processing of data and products from the MODIS sensor, taught by **Gerardo López** from University College London, Dr. René Colditz and **Isabel Cruz** from CONABIO. With a duration of two days.

## ***Objective***

To provide the participants the characteristics and principal applications of the MODIS sensor, the products available on the web and provide technical skills for the processing and analysis of the data.

20 people from Argentina, Colombia and Mexico attended to the workshop.





- RELATIF will participate in a meeting in Costa Rica, with **Global Wildland Fire Network**.
- Bolivia Government asked to Mexican Government help to implement its Fires manage program, including Forest fires remote sensing. CONABIO offered an explanation about Early warning system of forest fires and there is a possibility to give a course.
- CONABIO and INPE will update the reception system to receive VIIRS images on October.
- INTA has the plan to update the system.



*Thank you !*

*Gracias*

