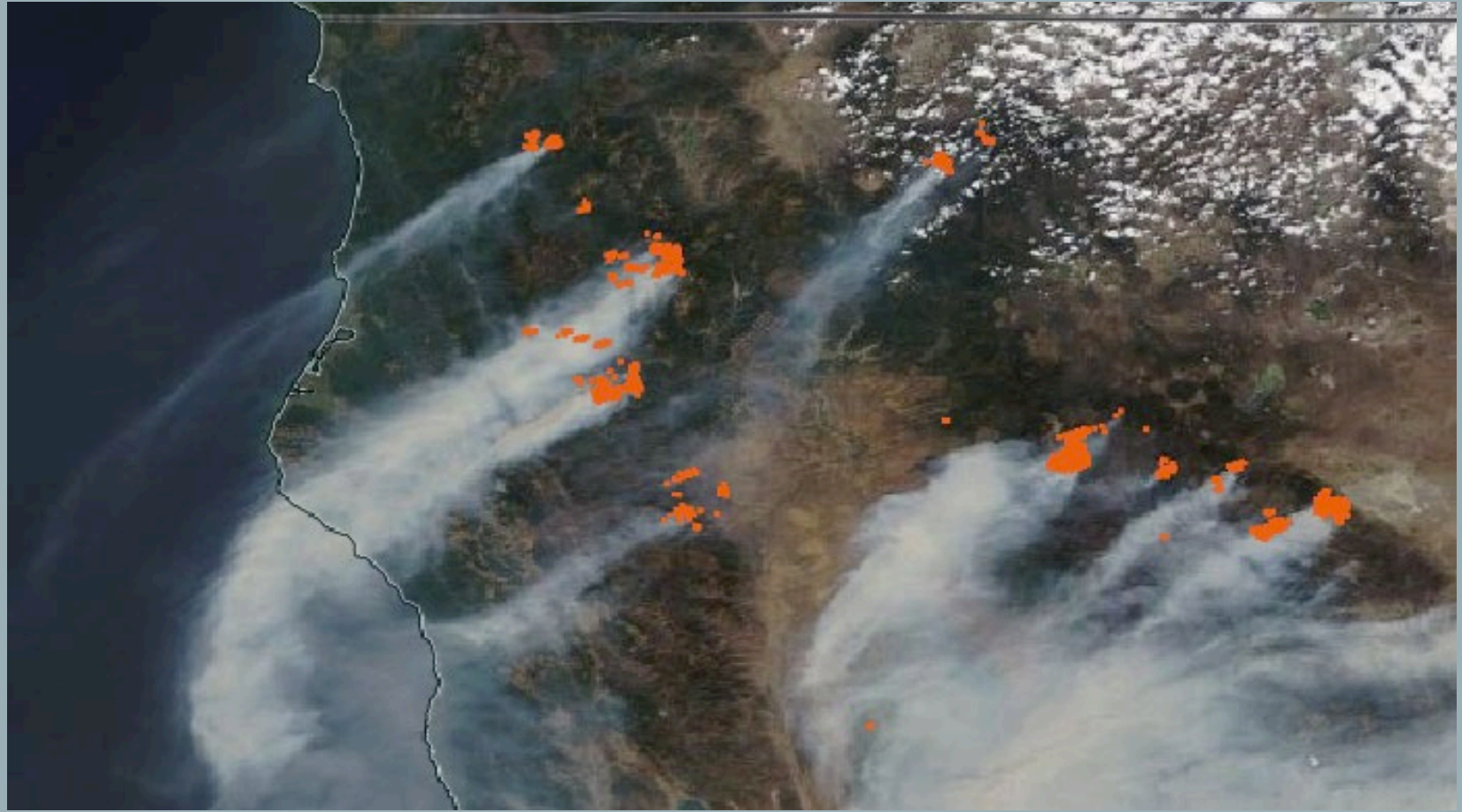


Updates on NASA FIRMS and FIRMS US/Canada

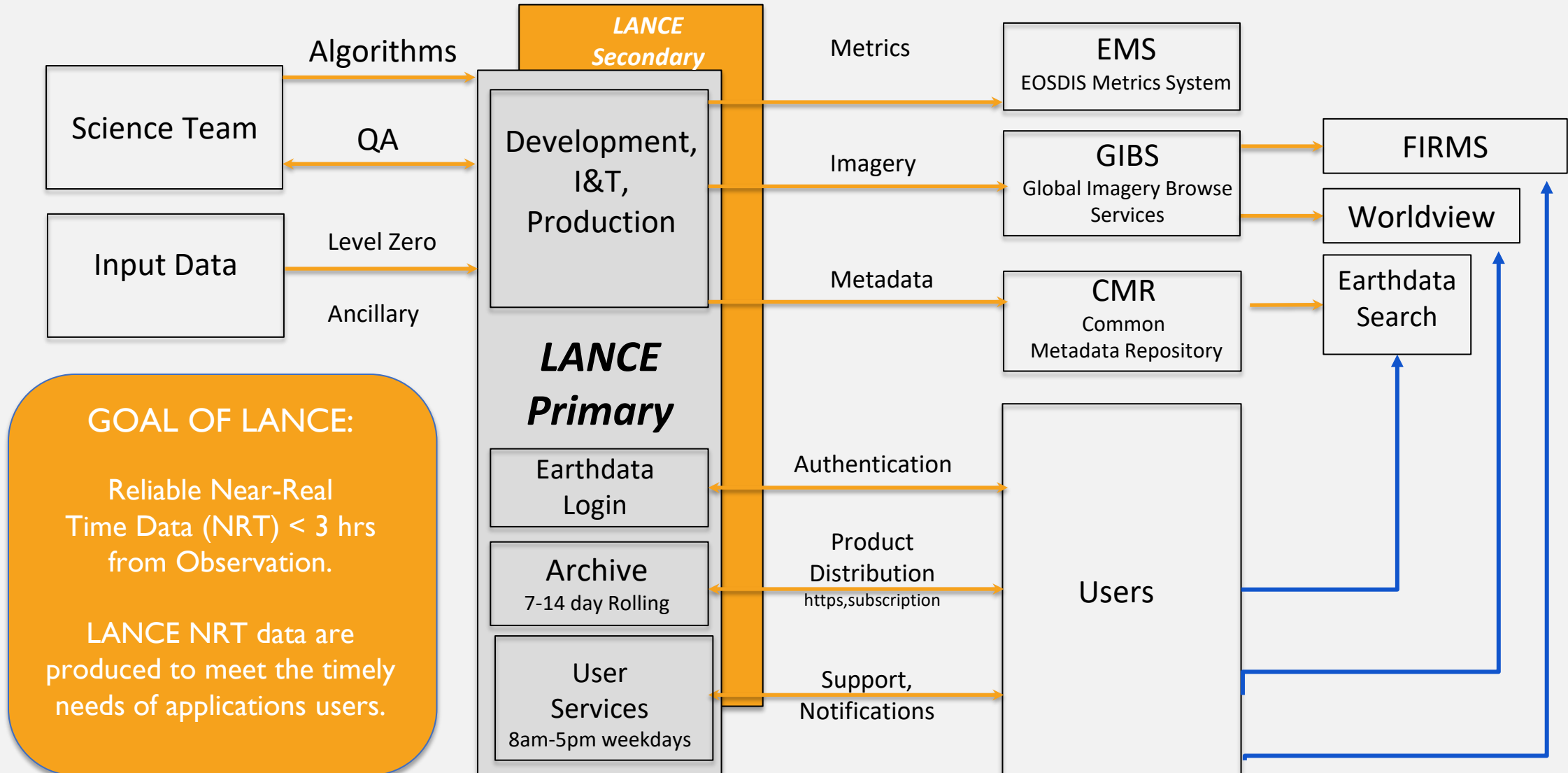


Diane Davies, LANCE Operations Manager

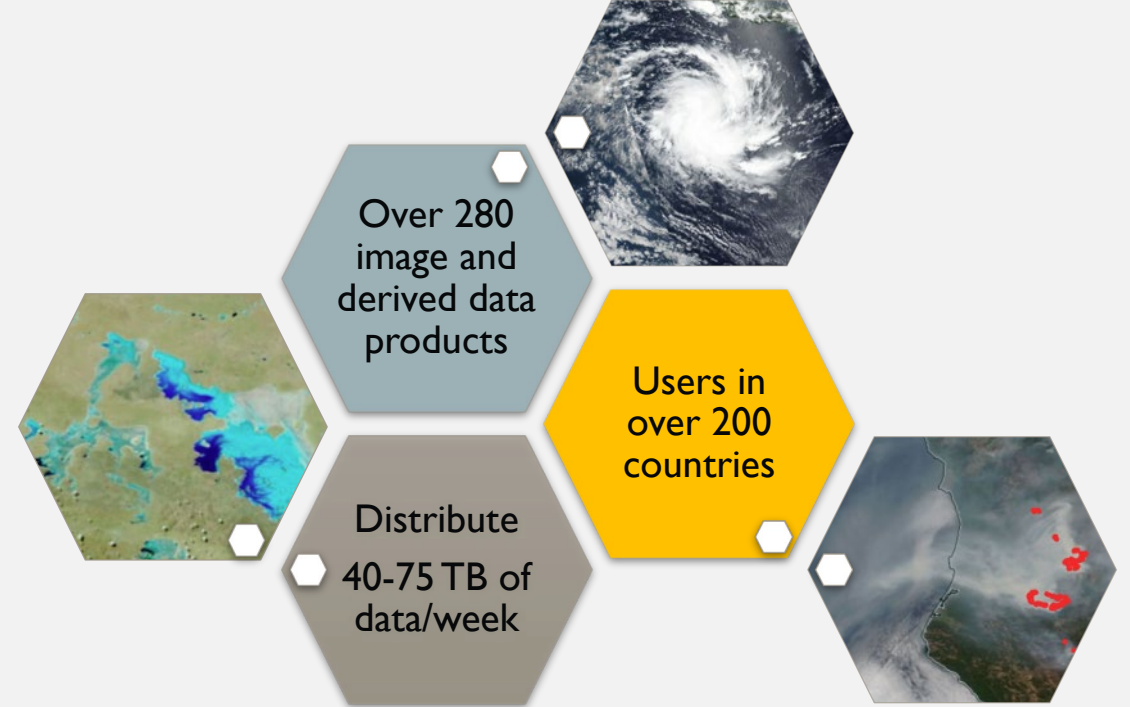
Brad Quayle (USFS). Otmar Olsina, Greg Ederer, Asen Radov (NASA GSFC)



LANCE IN A NUTSHELL



LANCE DISTRIBUTION

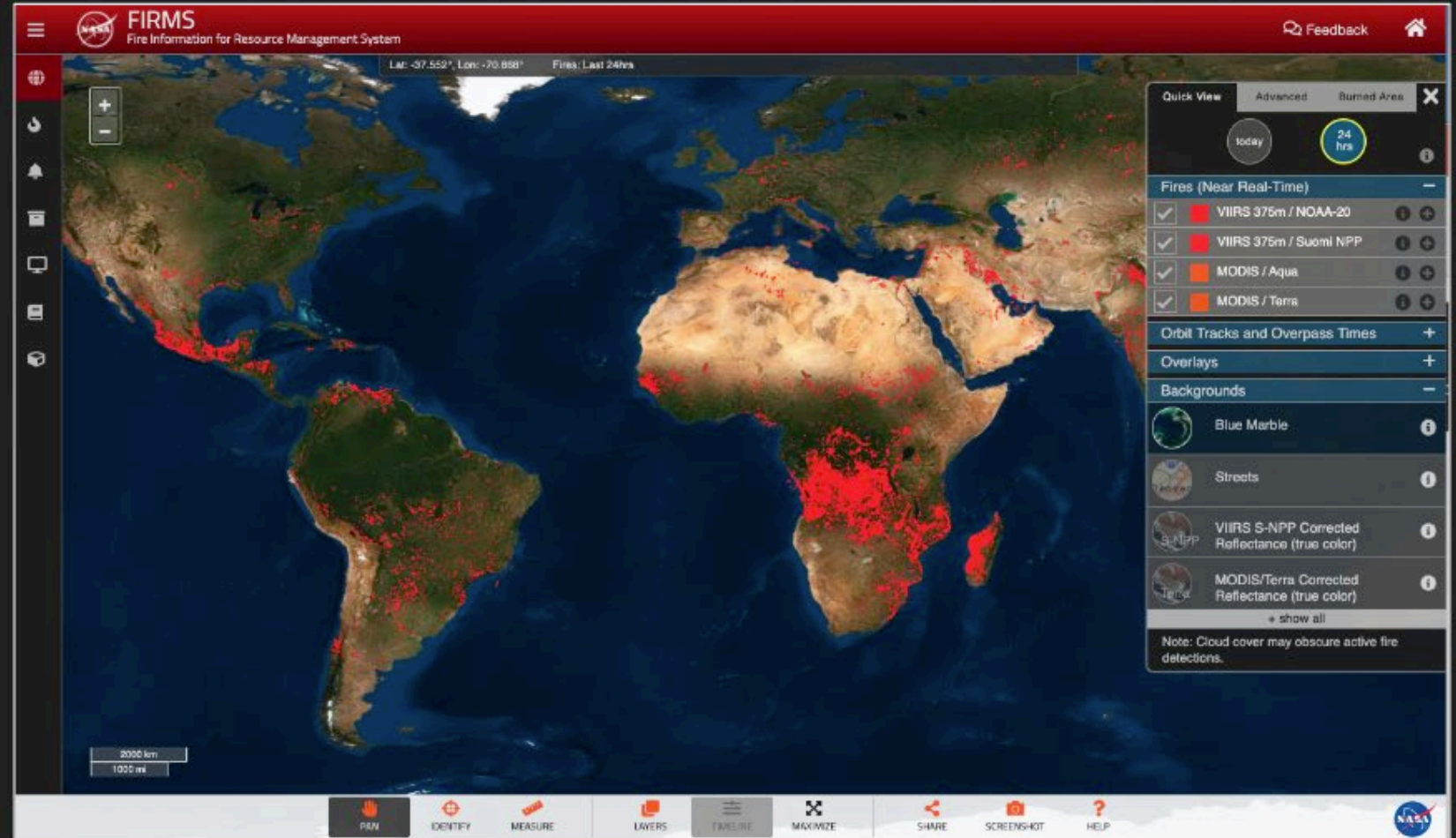


- [AIRS](#) - Atmospheric Infrared Sounder
- [AMSR2](#) - Advanced Microwave Scanning Radiometer 2
- [LIS ISS](#) - Lightning Imaging Sensor on the International Space Station
- [ICESat-2](#) - Advanced Topographic Altimeter System (ATLAS) on the Ice, Cloud, and land Elevation Satellite
- [MISR](#) - Multi-angle Imaging SpectroRadiometer
- [MLS](#) - Microwave Limb Sounder
- [MODIS](#) - Moderate Resolution Imaging Spectroradiometer
- [MOPITT](#) - Measurements of Pollution in the Troposphere
- [OMI](#) - Ozone Monitoring Instrument
- [OMPS](#) - Ozone Mapping and Profiler Suite
- [VIIRS-Atmosphere](#) - Visible Infrared Imaging Radiometer Suite
- [VIIRS-Land](#) - Visible Infrared Imaging Radiometer Suite

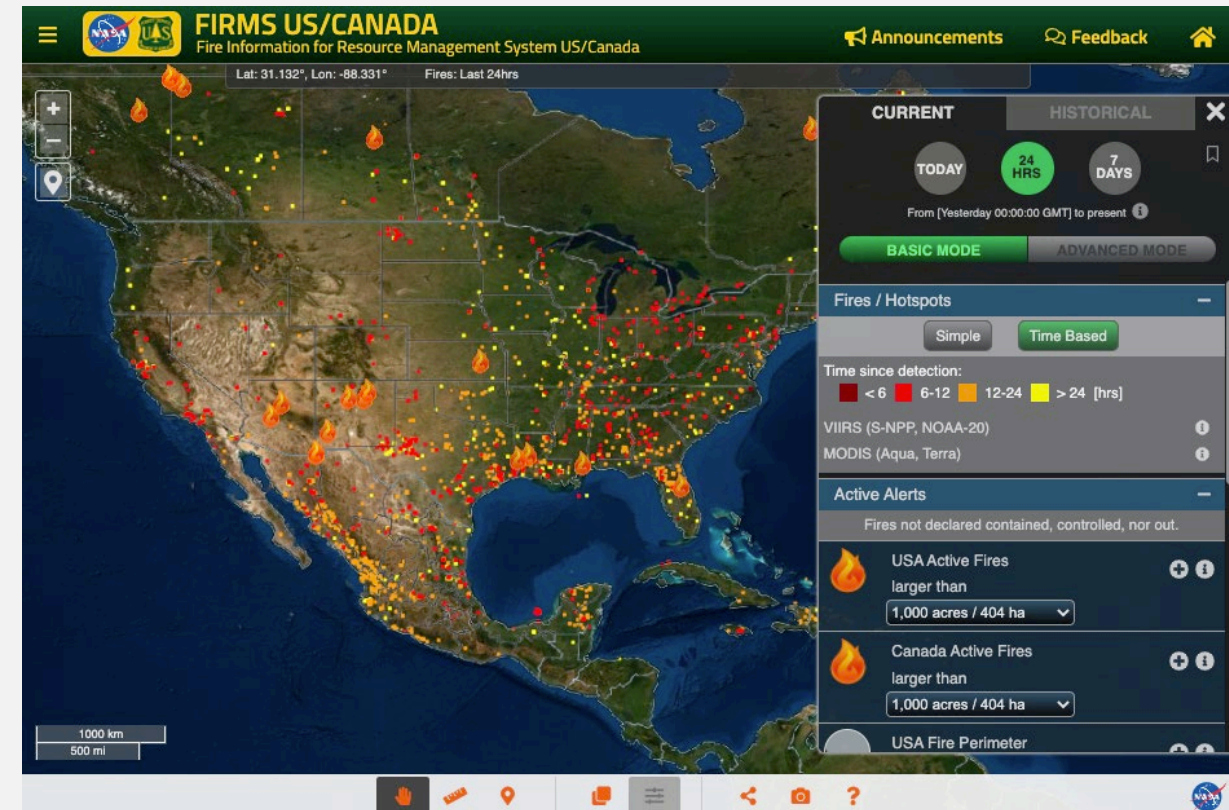
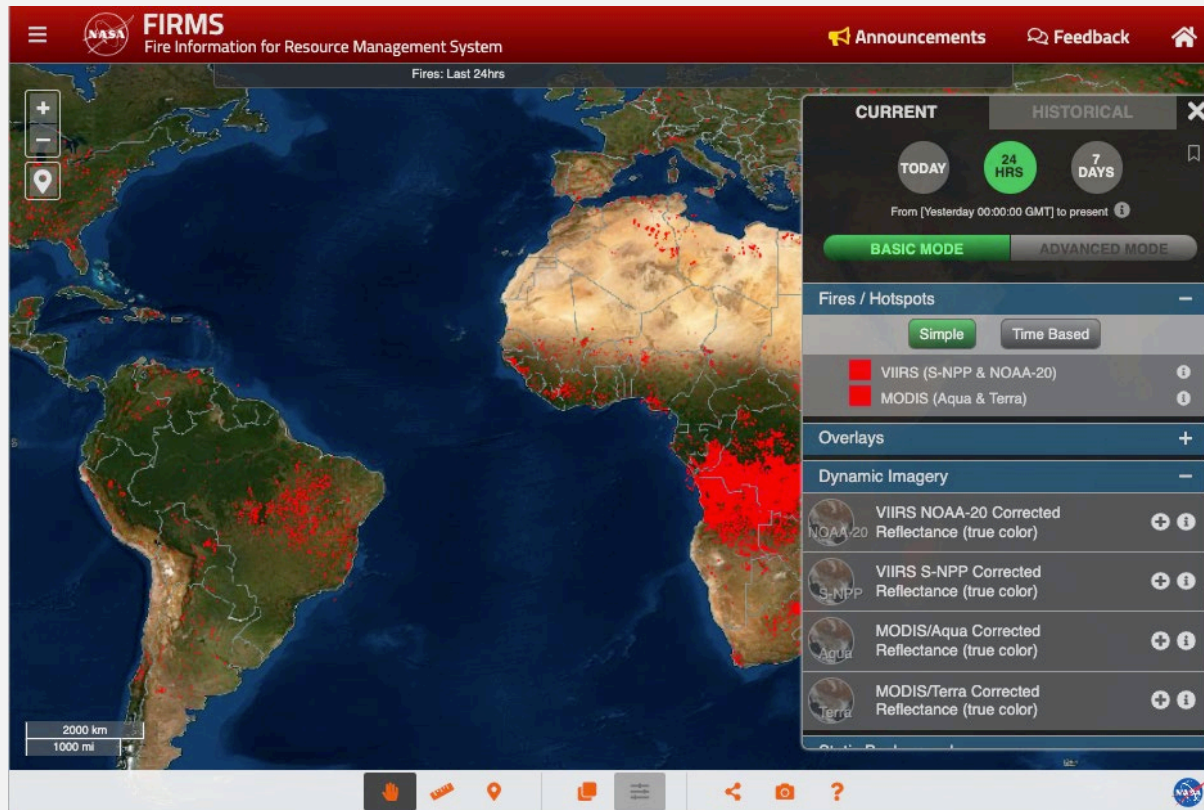
Fire Information for Resource Management System (FIRMS)

Originally developed at the University of Maryland. It was funded by NASA's Applied Sciences and the United Nations (UN) Food and Agriculture Organization (FAO) using data from MODIS Rapid Response

FIRMS became part of LANCE in 2012. In 2020 the USFS approached NASA to develop FIRMS US/Canada. The prototype was released in January 2021.

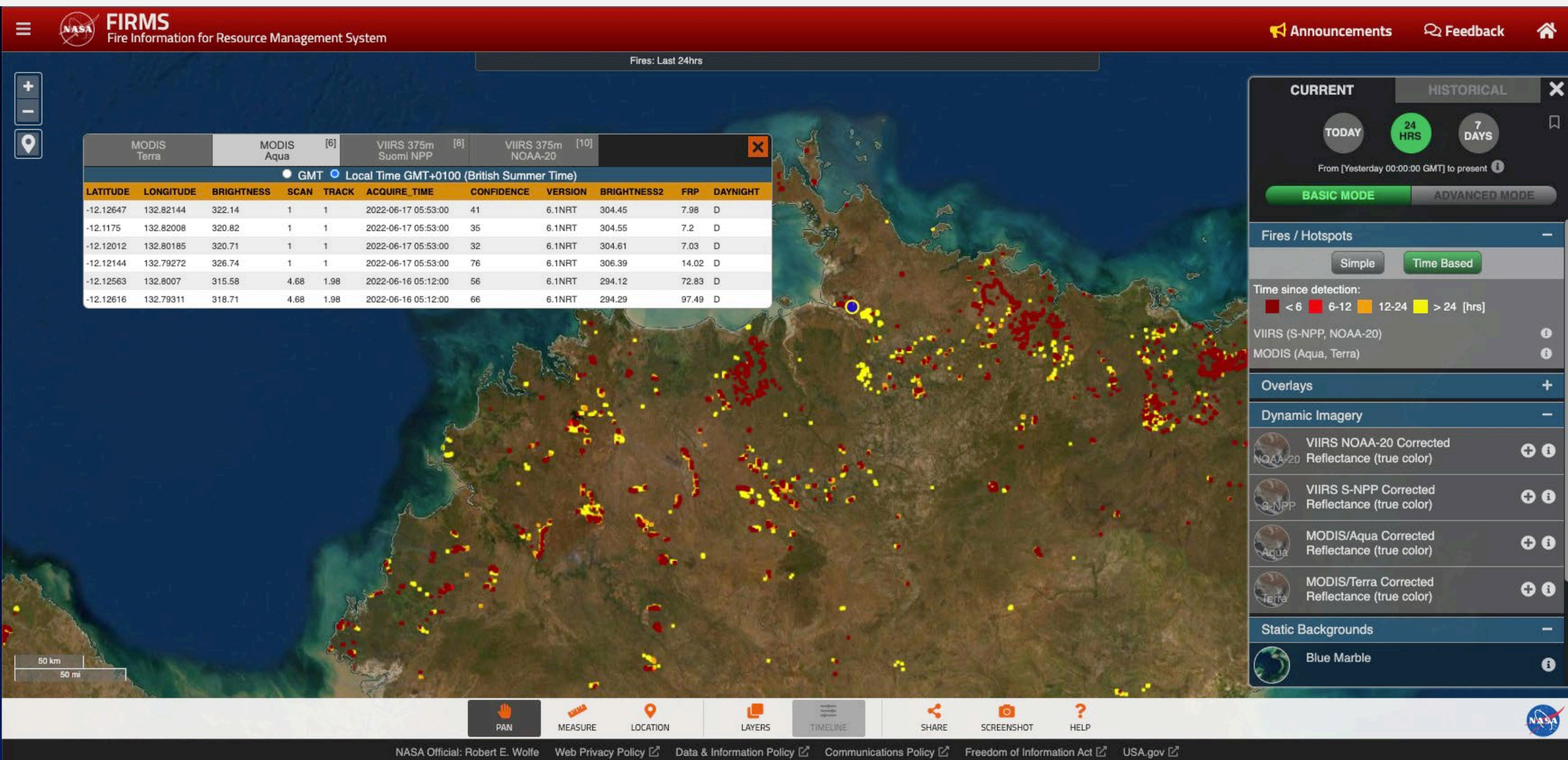


FIRMS & FIRMS US/CANADA



NEW FEATURES ADDED TO FIRMS

(GLOBAL AND US/CANADA)



FIRMS: BASIC AND ADVANCED MODE

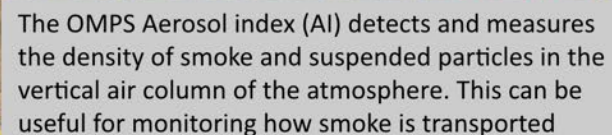
?
HELP



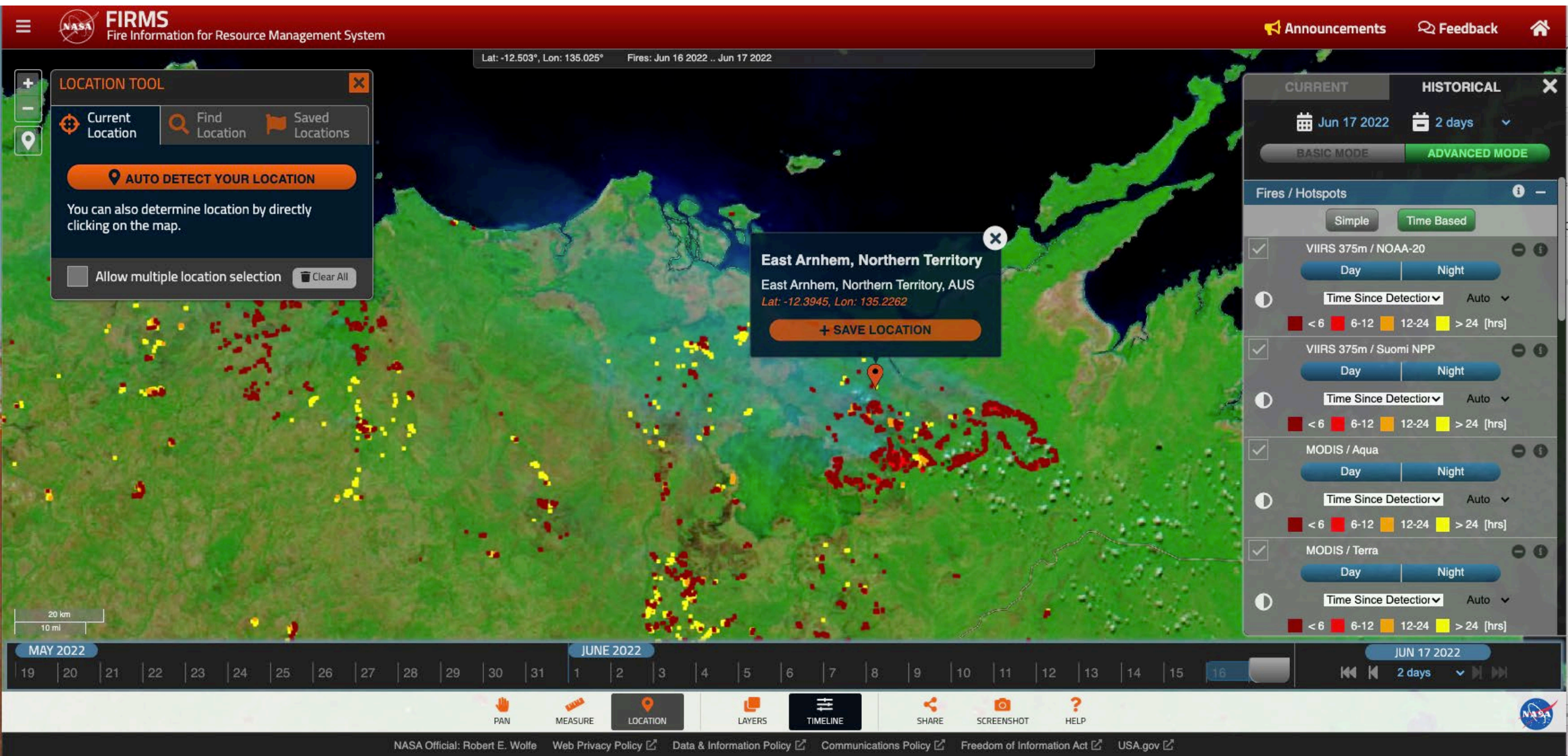
FIRMS: BASIC AND ADVANCED MODE



FIRMS: BASIC AND ADVANCED MODE



Time Since Detection, Location Tool and Timeline

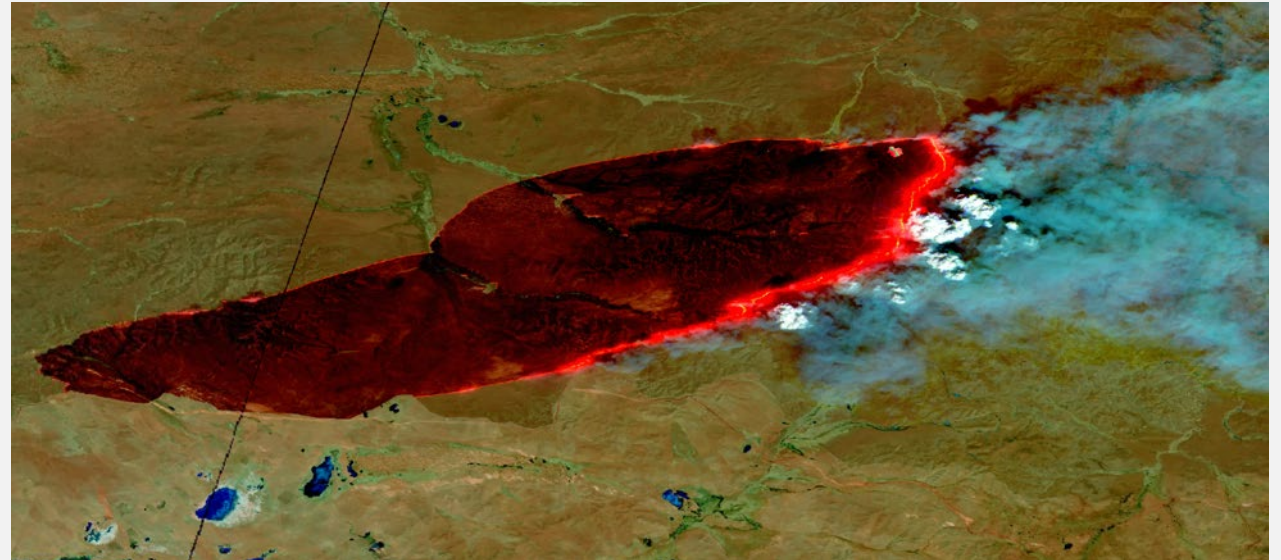


Measure Tool – Area and Distance

PROTOTYPE HARMONIZED LANDSAT AND SENTINEL 2 (HLS) FALSE COLOR COMPOSITE IMAGERY FOR LANCE FIRMS

- Available from March 15, 2022 – present on both US/Canada and Global FIRMS
- Dynamically generated imagery using COGs hosted in LP DAAC S3 bucket
 - Slower response times than pre-generated imagery as in GIBS

Satellite	L30	S30
FCC Band 1	7	12
FCC Band 2	5	8A
FCC Band 3	4	4



Slide courtesy of Brian Freitag (NASA MSFC / IMPACT). Presented at the LANCE UWG May 2022



FIRMS HLS TRUE COLOR/FALSE COLOR COMPOSITE ACCESS

FIRMS US/CANADA

Fire Information for Resource Management System US/Canada

Announcements

Feedback

HLS true color composite imagery available at all zoom levels

Lat: 48.146°, Lon: -131.327°

18:21

18:32

18:33

18:34

19:14

19:15

100 km

50 mi

APRIL 2022

3

4

5

6

7

8

9

10

11

12

13

14

15

16

17

18

19

20

21

22

23

24

25

26

27

28

29

30

MAY 2022

1

2

3

APR 29 2022

31 days

PAN

MEASURE

LOCATION

LAYERS

TIMELINE

SHARE

SCREENSHOT

HELP

CURRENT

HISTORICAL

Apr 29 2022

31 days

BASIC MODE

ADVANCED MODE

Fires / Hotspots

Active Alerts

Gridded Fire Hotspots

MODIS - Burned Area

Overlays

Orbit Tracks and Overpass Times

Harmonized Landsat / Sentinel-2 Imagery

Sentinel 2 Adjusted Reflectance HLS S30 Nadir BRDF (true color)

Current zoom level not supported

Landsat 8 Adjusted Reflectance HLS L30 Nadir BRDF (true color)

Current zoom level not supported

Dynamic Imagery

Static Backgrounds

Blue Marble

Streets

Topographic

Light Gray

Dark Gray

NOTE: ACTIVE FIRES / THERMAL ANOMALIES

FIRMS HLS TRUE COLOR/FALSE COLOR COMPOSITE ACCESS

FIRMS US/CANADA

Fire Information for Resource Management System US/Canada

Announcements

Feedback

False color composite imagery available at zoom levels of 9 or higher

10 km

10 mi

APRIL 2022

3 4 5 6 7 8 9 10 11 12 13 14 15 16 17 18 19 20 21 22 23 24 25 26 27 28 29 30

MAY 2022

1 2 3

APR 29 2022

31 days

PMN

MEASURE

LOCATION

LAYERS

TIMELINE

SHARE

SCREENSHOT

HELP

CURRENT

HISTORICAL

Apr 29 2022

31 days

BASIC MODE

ADVANCED MODE

Fires / Hotspots

Active Alerts

Gridded Fire Hotspots

MODIS - Burned Area

Overlays

Orbit Tracks and Overpass Times

Harmonized Landsat / Sentinel-2 Imagery

Sentinel 2 Adjusted Reflectance HLS S30 Nadir BRDF (true color)

(beta) Sentinel 2 Adjusted Reflectance HLS S30 (bands 12, 8a, 4) [good for burned area]

Landsat 8 Adjusted Reflectance HLS L30 Nadir BRDF (true color)

(beta) Landsat Adjusted Reflectance HLS L30 (bands 7-5-4) [good for burned area]

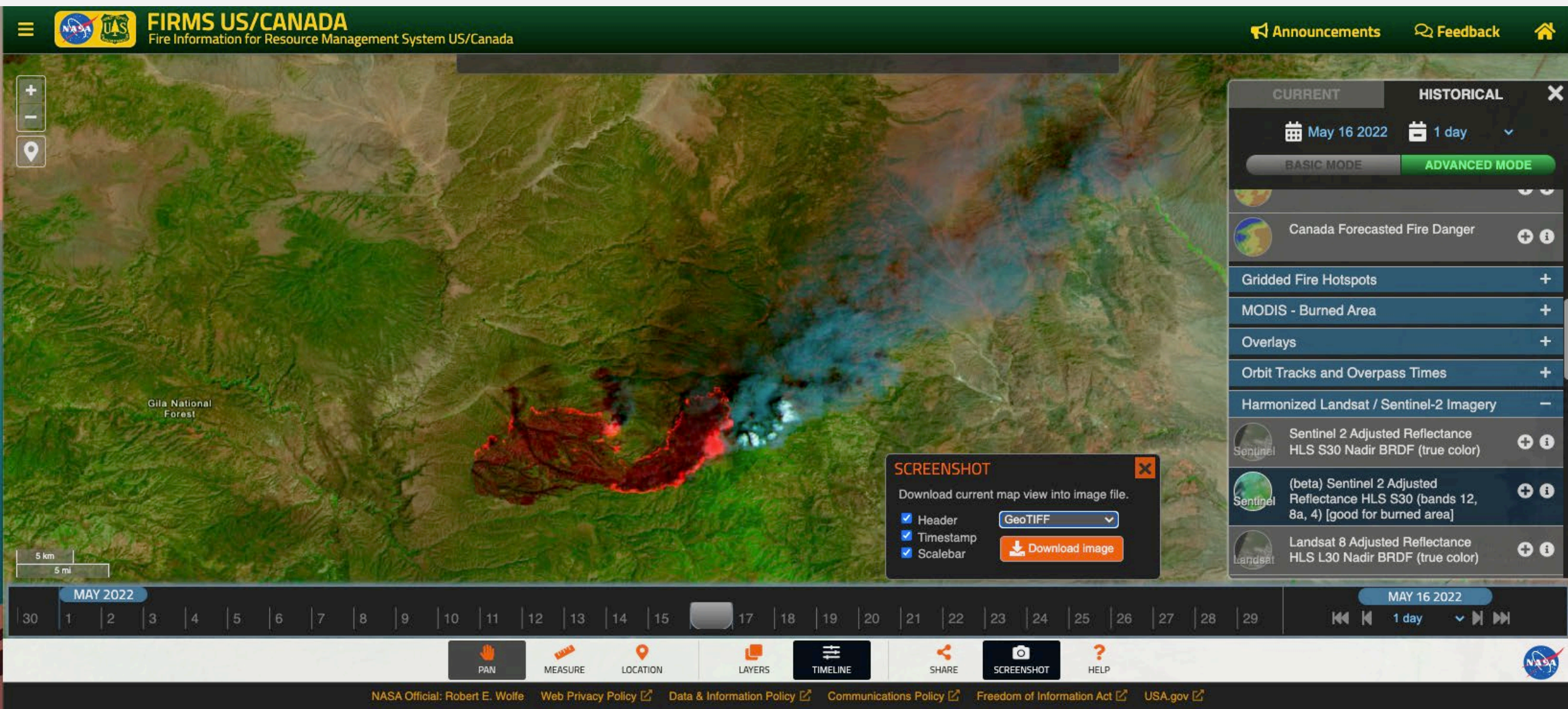
Dynamic Imagery

Static Backgrounds

NOTE: ACTIVE FIRES / THERMAL ANOMALIES

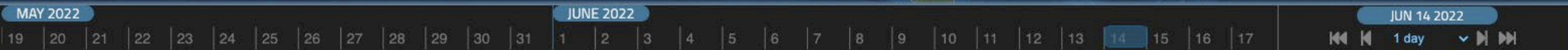
Hermit's Peak Fire, New Mexico





Black fire - HLS (beta) Sentinel 2 Adjusted Reflectance HLS S30 (bands 12, 8a, 4).
Shows active fire front and burned area on 16 May

FIRMS US/CANADA



Current incidents mapped on FIRMS US/Canada include links to national incident situation reports from trusted sources in the United States and Canada:

- [National Interagency Coordination Center \(NICC\)](#) (United States)
- [Canadian Interagency Forest Fire Center \(CIFFC\)](#) (Canada)

These reports provide valuable information about National Preparedness Levels, fire activity, and information about resources assigned to individual fires.



River Complex (3 fires), Klamath NF, USFS. NIMO (Team 3) and IMT 2 (CA Team 15). Nine miles southwest of Etna, CA. Timber and brush. Active fire behavior with backing, group torching and short-range spotting. Several communities, numerous structures and infrastructure threatened. Evacuations, area, road and trail closures in effect.

McCash, Six Rivers NF, USFS. IMT 2 (SW Team 3). Fourteen miles northeast of Somes Bar, CA. Timber, brush and tall grass. Extreme fire behavior with uphill runs, running and long-range spotting. Several communities and communication infrastructure threatened. Evacuations, area, road and trail closures in effect.

Lava, Shasta-Trinity NF, USFS. Four miles east of Weed, CA. Timber and brush. Minimal fire behavior with creeping and smoldering. Area and road closures in effect.

Incident Name	Unit	Size		%	Ctn/Comp	Est	Personnel		Resources			Strc Lost	\$\$ CTD	Origin Own
		Acres	Chge				Total	Chge	Crw	Eng	Hel			
Dixie	CA-BTU	662,647	35,896	35	Ctn	9/30	5,982	-59	71	503	20	1,217	285M	ST
Monument	CA-SHF	128,613	9,249	10	Ctn	9/1	889	-31	12	85	9	32	21.7M	FS
Caldor	CA-ENF	62,586	39,667	0	Ctn	8/31	601	359	11	58	0	0	2.8M	FS
McFarland	CA-SHF	111,016	12,609	51	Ctn	9/2	631	179	16	57	7	2	23.3M	FS
Antelope	CA-KNF	60,634	2,970	27	Ctn	9/30	828	8	14	39	1	11	17.8M	FS
River Complex	CA-KNF	53,071	4,857	10	Ctn	10/1	806	54	14	40	9	0	14.6M	FS
McCash	CA-SRF	6,788	3,555	0	Ctn	9/29	338	36	4	5	2	0	5.3M	FS
Lava	CA-SHF	26,409	0	85	Ctn	9/1	5	0	0	1	0	23	35.3M	FS

Northwest Area (PL 5)

New fires:	7
New large incidents:	0
Uncontained large fires:	39
Type 1 IMTs committed:	7
Type 2 IMTs committed:	9

Ford Corkscrew, Northeast Region, DNR. IMT 2 (SW Team 5). Eleven miles south of Springdale, WA. Timber and brush. Active fire behavior with uphill runs, isolated torching and spotting. Several communities and structures threatened. Evacuations and road closures in effect.

Schneider Springs, Okanogan-Wenatchee NF, USFS. IMT 2 (EA Silver Team). IMT 1 (PNW Team 2) mobilizing. IMT is also managing the Windy Pass incident. Twenty-one miles northwest of Tieton, WA. Short grass, timber and brush. Extreme fire behavior with uphill runs, running and flanking. Several communities and numerous structures threatened. Evacuations, area, road and trail closures in effect.

Windy Pass, Okanogan-Wenatchee NF, USFS. Eleven miles southwest of Cle Elum, WA. Timber and short grass. Minimal fire behavior. Structures threatened. Area, road and trail closures in effect.

Walker Creek, Northeast Region, DNR. IMT 2 (NR Team 6). IMT is also managing the Chickadee Creek incident. Four miles northwest of Wauconda, WA. Timber and short grass. Active fire behavior with single tree torching, short-range spotting and flanking. Several communities and numerous structures threatened. Evacuations, area, road and trail closures in effect.

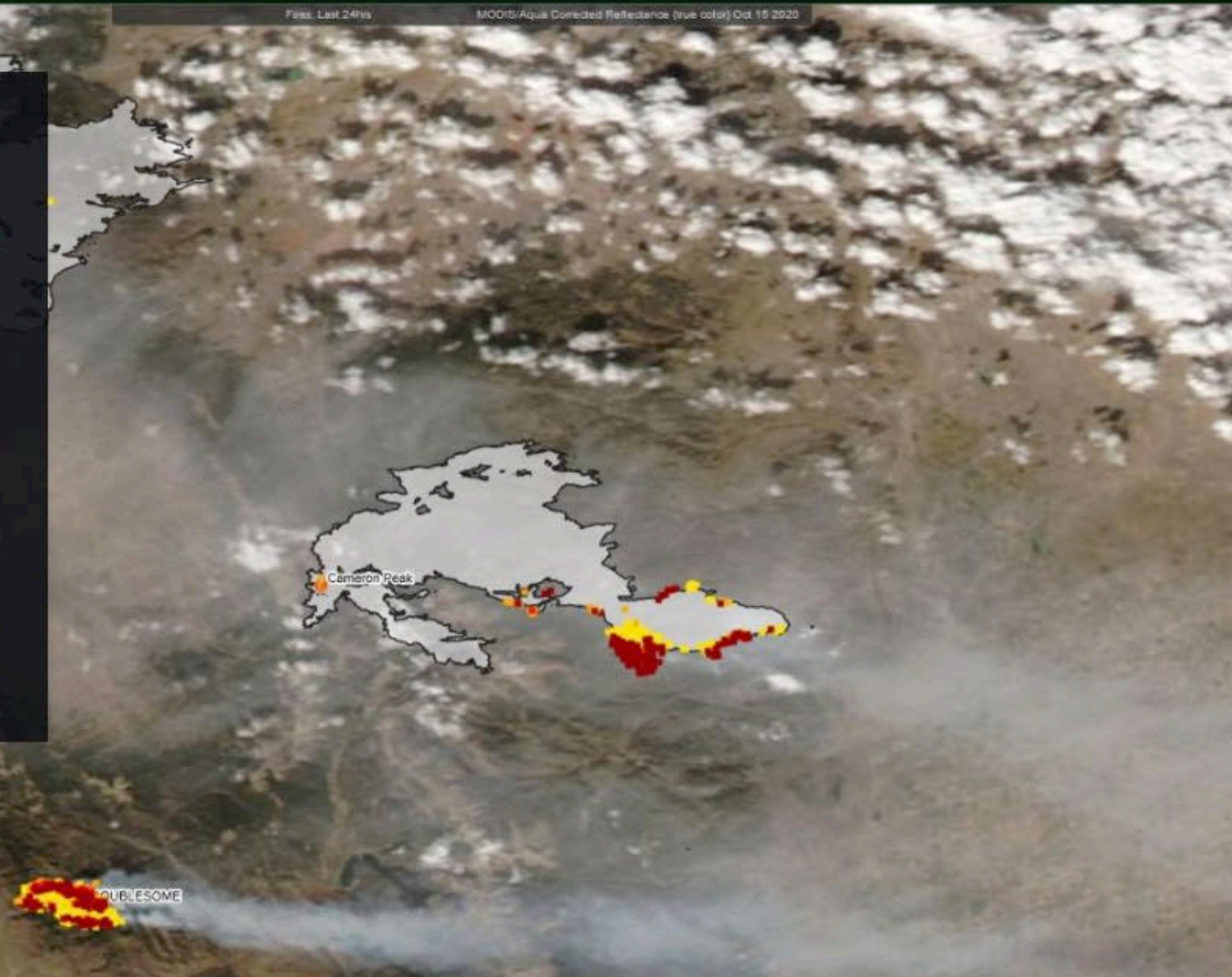


Fires: Last 24hrs

MODIS/Aqua Corrected Reflectance (true color) Oct 15 2020

Beyond just fire boundaries, FIRMS US/Canada features fire perimeters for current incidents provided by [Wildland Fire Interagency Geospatial Services \(WFIGS\) Group](#).

The perimeters of fires can be overlaid with active fires/hotspots, colored to show time since detection. This integration allows users to visualize where activity currently is on the incident and the fire's direction and recent growth.



Current

Historical

today

24 hrs

my location

Fires (Near Real-Time)

☒ VIIRS 375m / NOAA-20

Day

Night

Time Since Detection

Auto

< 6

6-12

12-24

> 24 [hrs]

☒ VIIRS 375m / Suomi NPP

Day

Night

Time Since Detection

Auto

< 6

6-12

12-24

> 24 [hrs]

☒ MODIS / Aqua

Day

Night

Time Since Detection

Auto

< 6

6-12

12-24

> 24 [hrs]

☒ MODIS / Terra

Day

Night

Time Since Detection

Auto

< 6

6-12

12-24

> 24 [hrs]

Active Alerts

USA Active Fires

Canada Active Fires

USA Red Flag Warning

USA Fire Weather Watch

USA Fire Perimeter

Overlays

Orbit Tracks and Overpass Times





FIRMS showing Interagency fire management boundaries of the US National Geographic Area Coordination Centers (GACC).

NEXT STEPS

FIRMS Global

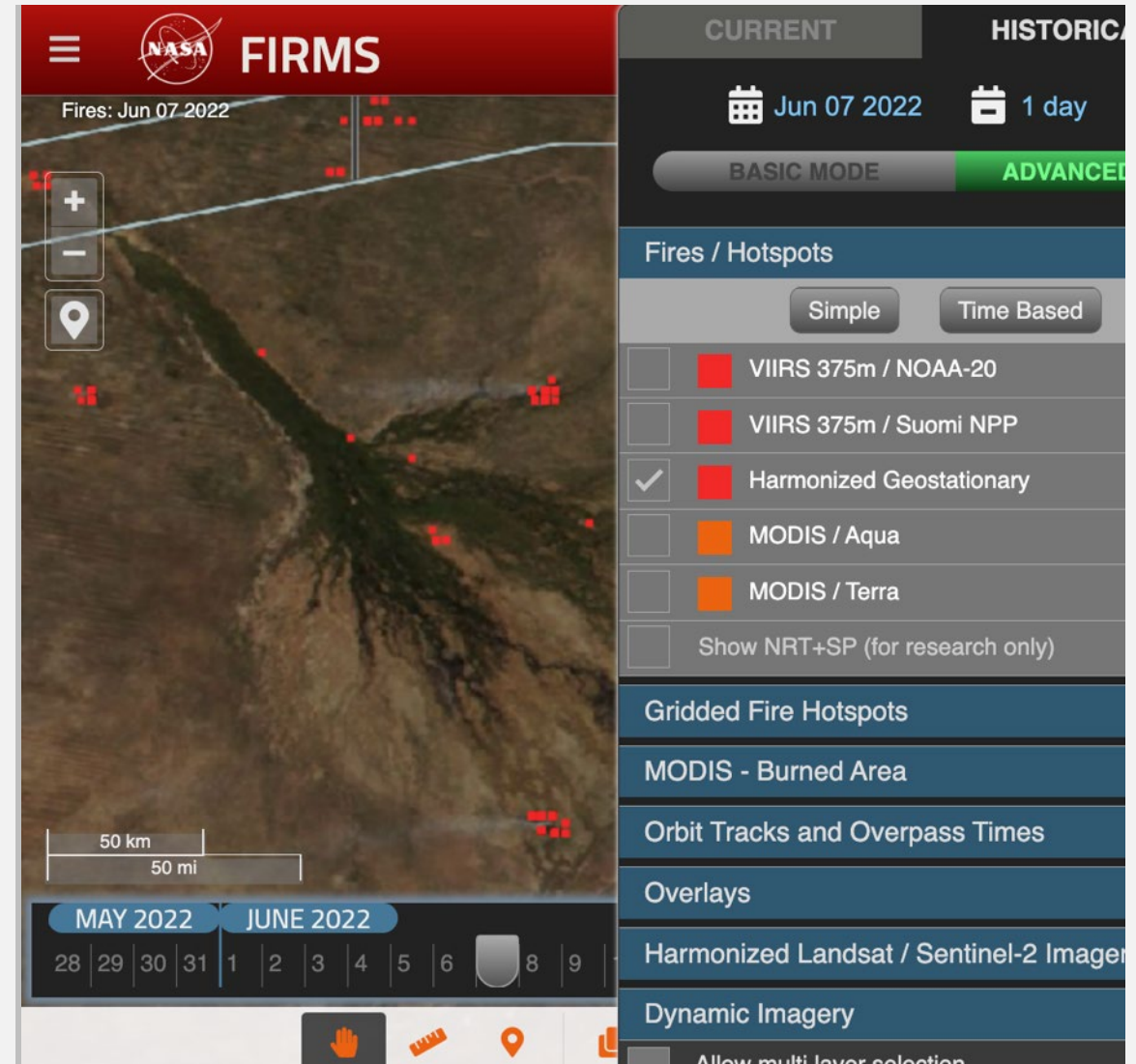
Geostationary active fire data

- Himawari, Meteosat - FRP Algorithm
- GOES 16 & 17 FDC NOAA Algorithm

FIRMS US/Canada

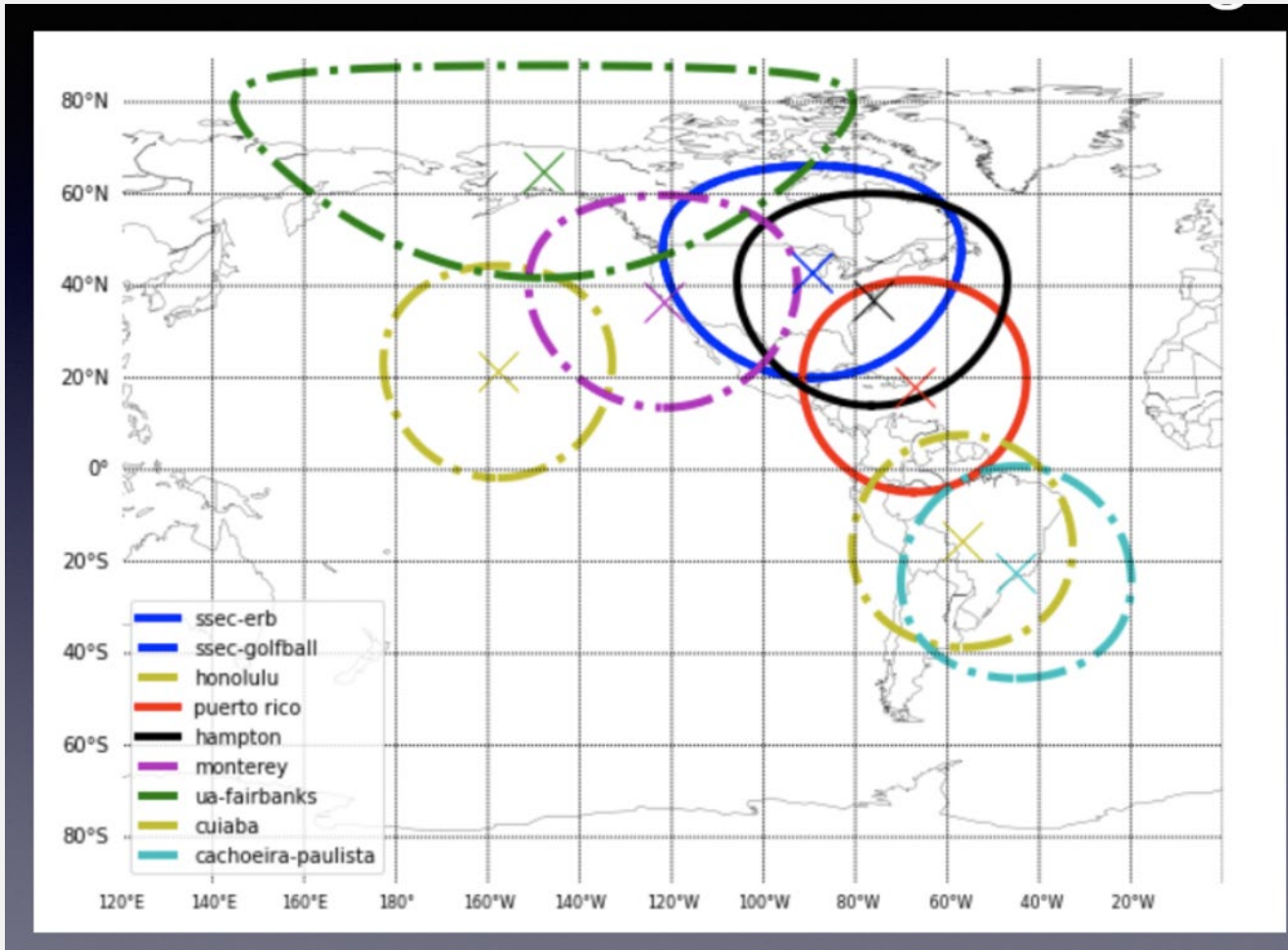
RT MODIS and VIIRS

Landsat Active Fire



Ultra Low Latency Detection of Active Fires using VIIRS and MODIS

Current and Planned Coverage of Real-Time Data



Current Status

- Ultra low latency data are received from Madison (x 2 antennas), Hampton, and Mayaguez.
- Standard low latency data are received from Honolulu and Monterey (after the pass is complete).
- MODIS data are processed via OCSSW and MOD14; VIIRS data are processed via VIIRS L1 and VFIRE375.
- Fire locations are converted to CSV and are provided to LANCE/FIRMS via Web API.
- MODIS latency is ~ 25 seconds; VIIRS is ~ 50 seconds for data ingested and processed in real time.
- Have tested VIIRS data ingest from two antennas in Brazil; have requested VIIRS data from Univ. of Alaska Fairbanks.

Additional Resources



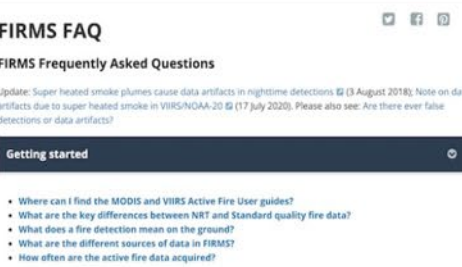
FIRMS Blog
 Tips, Suggestions and What's new.



YouTube Tutorial
 How to use NASA's FIRMS.



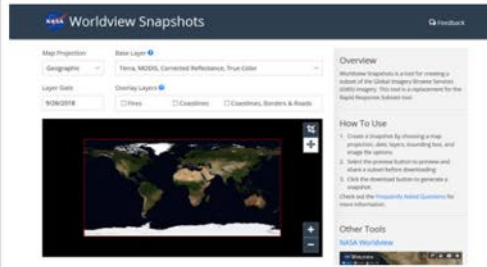
FIRMS Story Map
 Managing Wildfires with Satellite Data.



FIRMS FAQ
 Frequently Asked Questions.



Worldview
 Explore satellite imagery.



Worldview Snapshots
 Creating image subsets and snapshots.

NASA Earth Science Data Resources for Wildfires



FIRMS

NASA's Fire Information for Resource Management System (FIRMS) enables access to global near real-time (NRT) satellite imagery, active fire detections and other data from multiple satellites. FIRMS combines value-added data products to provide critical information to wildfire management organizations and impacted individuals. FIRMS distributes active fire data in multiple GIS formats, as web services and as automated detection alerts.

Access FIRMS: <https://earthdata.nasa.gov/firms>



FIRMS US/Canada

FIRMS US/Canada combines FIRMS capabilities, value-added and regionally specific data products for North America as well as ongoing efforts by NASA and the USDA Forest Service to integrate new technologies and data enhancements. NRT satellite data with real-time availability for selected data sources will be available in summer 2022.

Access FIRMS US/Canada: <https://firms.modaps.eosdis.nasa.gov/usfs/>



FIRMS Tutorial

This tutorial provides an introduction to the basic and advanced features of NASA's FIRMS. We show how to view satellite observations of active fires and hotspots on an interactive map; navigate between the basic and advanced modes; learn what a satellite-derived fire detection means on the ground and demonstrate how to add data imagery layers to be able to view fires and smoke plumes.

View tutorial: <https://youtu.be/SSd7KnWN9CM>



Pathfinders and Toolkits

Data Pathfinders are designed to help users select and learn how to use data products by providing links to commonly used datasets across NASA's Earth science data collections. Toolkits, which are organized by topic and provide access to datasets, articles, and other useful information, show users different ways to visualize and subset NASA data, and provide options for saving data in different file formats.

<https://earthdata.nasa.gov/pathfinders>

<https://earthdata.nasa.gov/toolkits>



Blog, Tutorials, and FAQ

Do you have questions about how to use FIRMS or FIRMS US/Canada? Interested in learning what new capabilities are available? You can find all of this information, and learn more about the active fire detections and data products at: <https://firms.modaps.eosdis.nasa.gov/usfs/resources/>



Applied Sciences Wildfires Program

The Applied Sciences Wildfires program area leverages Earth-observing data, applied research and partnerships to reduce wildfire risk before, during, and after an event.

Learn more: <https://appliedsciences.nasa.gov/what-we-do/wildfires>



Need Help with our Data, Services, or Tools?

Email Earthdata Support at: support@earthdata.nasa.gov

Join the NASA Earthdata Forum: Interact with subject matter experts from several Distributed Active Archive Centers (DAACs) to discuss your data and research needs.

<https://forum.earthdata.nasa.gov>

Connect with Us on Social Media

Follow NASA Earthdata for Earth science data, services and tools, news, and updates on social media:

 <https://twitter.com/NASAEarthdata>

 <https://www.facebook.com/NASAEarthdata>

National Aeronautics and
Space Administration

