

# The NASA LCLUC SUPPORT OF THE GOFC- GOLD NETWORKS: MedRIN

Garik Gutman,  
Land-Cover/Land-Use Change Program Manager,  
NASA Headquarters  
Washington, DC



- LCLUC is a global program supported through regional partnerships to enhance
  - Regional scientists' access to NASA assets
  - NASA scientists access to national data and facilitate field data collection
- LCLUC is a catalyst for regional science initiatives through
  - Networks by leveraging national/local knowledge and resources and strengthening NASA research projects
  - Workshops focused on societal priorities and policy-relevant land-use science
- LCLUC is a promoter of regional capacity building through
  - NASA data-use training
  - International data sharing

# GOFC-GOLD

- CEOS Pilot Project: Global Observation of Forest Cover (GOFC)
  - Editors: A. Janetos, and F. Ahern, Ottawa, Canada, July 7-10, 1997

“Capacity Building: The Regional Networks form an important venue through which capacity-building can be achieved. Inter- and intra-regional capacity building activities should be continued and strengthened.”

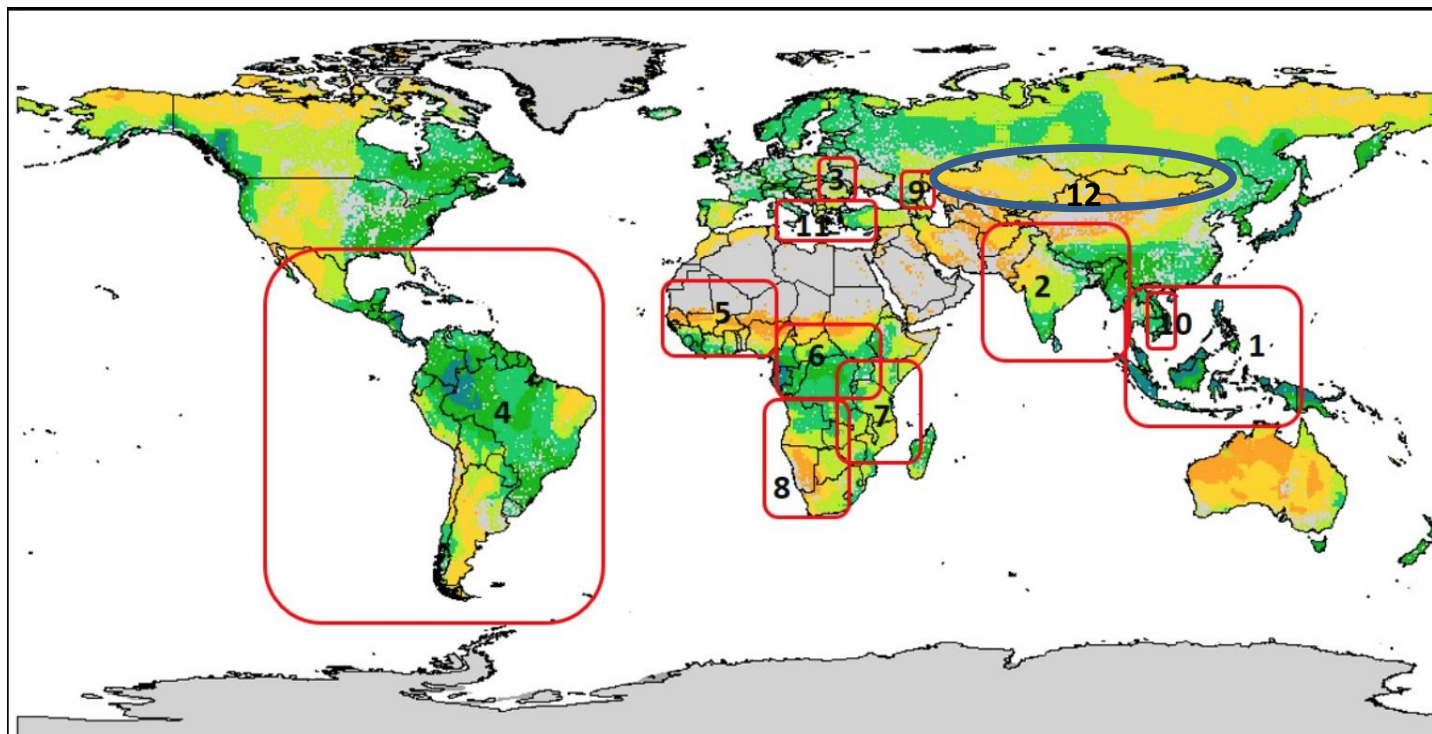
- A Revised Strategy for GOFC-GOLD , Editors: J. Townshend and M. Brady, 2006

*“To ensure that capacity building is maintained, the regional networks should form or strengthen their linkages and partnerships to international development agencies and organizations.”*

# GOFC-GOLD

- Implementation Teams (IT)
  - Land Cover Characteristics and Change
  - Fire Monitoring and Mapping
- Working Groups (WG)
  - Working Group on Reducing Emissions from Deforestation and Forest Degradation (REDD)
  - Group on Biomass Monitoring
- Regional Networks
  - Interface between IT and regional data users

## LCLUC Capacity Building: GOFC-GOLD Regional Networks



1. Southeast Asia Regional Research and Information Network (SEARRIN); 2. South Asia Regional Information Network (SARIN); 3. South Central European Regional International Network (SCERIN); 4. Red Latinoamerica de Teledeteccion e Incendios Forestales (RedLaTIF); 5. West African Regional Network (WARN); 6. Observatoire Satellital des Forets d'Afrique Central (OSFAC); 7. Miombo Network (MIOMBO); 8. Southern Africa Fire Network (SAFNET); 9. Caucasus Regional Information Network (CaucRIN); 10. Mekong Regional Information Network (MekRIN); 11. Mediterranean Regional Information Network (MedRIN); 12. Central Asian Regional Information Network (CARIN)

# The new GOFC-GOLD Network in the Mediterranean: MedRIN

- Enhancing regional science: methods, data, products
- Contribution to the global change science
  - Validation, methods, inter-comparison studies
- Socio-economic components
- Regular meetings, continuous interactions between meetings
  - SCERIN model
- Website, inventory of projects, publications, etc.
- Educational component (TAT NASA-ESA model)

# Democracy- Δημοκρατία

- Identify a couple of leads in each country
  - Different institutions preferred
  - Their names should be on the website
- Involve provincial institutions from start
- Aspire to equal representation from each country/institution
- Diversify the venues so that member countries would feel ownership
- Gender
  - Aspire to gender balance
- Age
  - Bring in younger, active participants, for continuity
- Rotate leadership
- Data Democracy
  - ***Data democratization** is the ability for information in a digital format to be accessible to the average end user. The goal of **data democratization** is to allow non-specialists to be able to gather and analyze **data** without requiring outside help*

# Steps Forward

- Develop a roadmap with timeline and milestones
- Plan for two years at least: not only the next meeting but a meeting after that
- Annual programmatic MedRIN meetings for the group
  - Topical meeting of sub-groups (focus groups) on a 6-month basis
  - Continuous interactions during the year
- Think of a joint proposal, a paper for EC and various funding sources
- POC and the lead for MedRIN is Vince – all actions issues through him



# Important LCLUC-Related Meetings in 2019



# Important MedRIN Ingredients



Vinc AMBROSIA  
**Αμβροσία**



NEKTARIOS Chrysoulakis  
**Νεκταριους**

# NASA Solicitations

- Research Opportunities in Space and Earth Science (ROSES) - published every February by NASA <http://nspires.nasaprs.com/external/>
- NASA funding may not be used for foreign research efforts at any level, whether as a collaborator or a subcontract.
- The direct purchase of **supplies and services, which do not constitute research**, from non-U.S. sources by U.S. award recipients is **permitted**
- 2019 LCLUC Step-1 proposals due August 1, 2019; if encouraged Step-2 proposals are due by March 3, 2020
  - The eligible proposers (both PI and co-Is) should have their **Ph.D. degree** awarded **no earlier than 2014**, so that at the time of submission of the full proposal (March 2020) a proposer would be no more than 6 years after the Ph.D. degree. **No restriction on the time after Ph.D. is imposed on collaborators.**
  - **One of the geographic regions of interest is Mediterranean**
  - **All LCLUC-related topics in various sectors: forests, Ag, urban, environment**
    - Read carefully the solicitation text, it's on internet now
    - <https://nspires.nasaprs.com/external/solicitations/summary!init.do?solId={716BCFE6-52B4-DB7F-B79A-59F3E7EE14A2}&path=open>
  - **Proposal must have a socio-economic component**

Thank You - ευχαριστώ

